

Tech Tip Tuesday—October 15, 2013

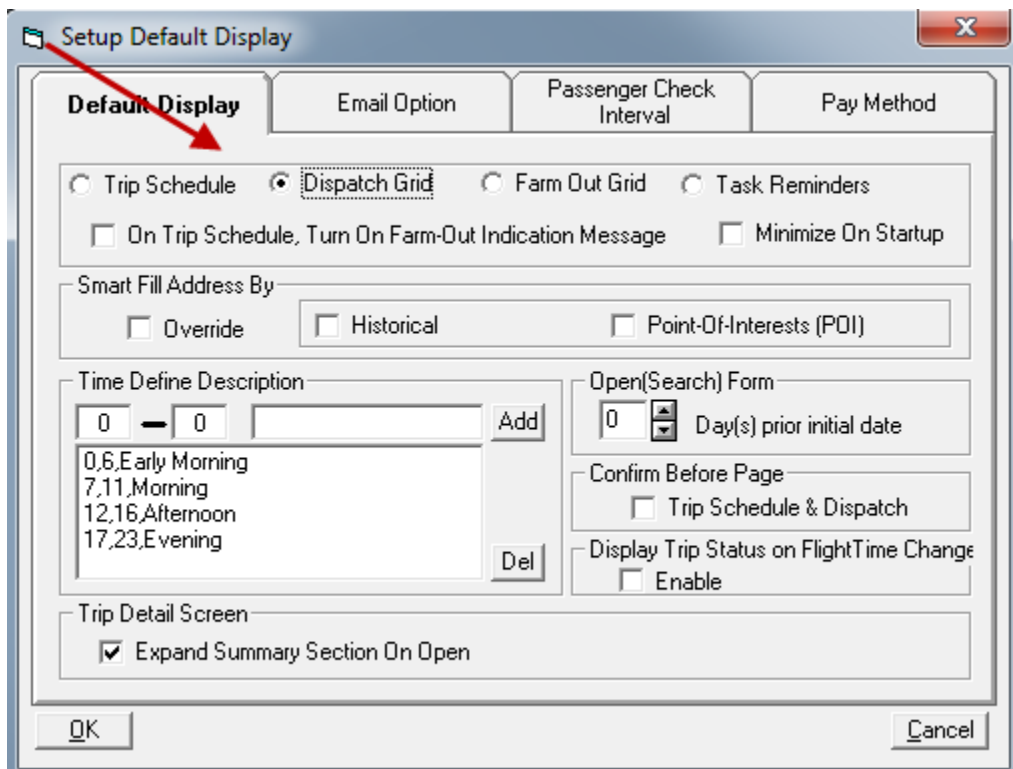
by David Hirsch

What screen do you prefer?

While many of you are huge fans of the Trip Schedule screen (the bar-graph where you can drag and drop trips), we also understand that some of you prefer the Dispatch Grid.

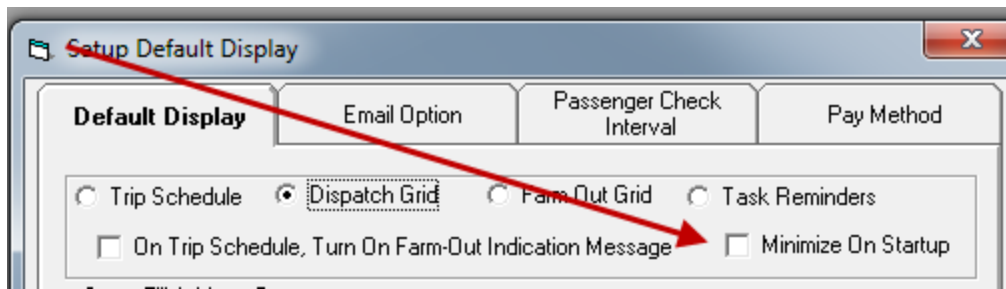
When you first launch Livery Coach reservations, it normally launches the Trip Schedule screen...but that is behavior that can be changed.

If you prefer that the system open with the Dispatch Grid instead, that is easily done. Simply select “Options...Default Display” from the top menu, and make sure that “Dispatch Grid” is checked, as it is in the below example. (Note that if nothing is checked, then the Trip Schedule will be what opens.)



Now we also know that some of you prefer a “blank screen”—that is, a peaceful field of gray so that open reservations are obvious. But, you may have noticed that, if you close the trip schedule and the dispatch screens, after a minute or two, one will open back up. The reason for this is that there is actually computer code required for the system that runs in these screens (called “forms”)...so at least one of them needs to be open at all times for the system to work properly.

That said, you don't have to actually have to have the screen visible—it can be minimized so it's out of your way. If you look carefully, you will see the option to check "Minimize On Startup".



If you check this box, then the main screen will appear, then shrink to minimal size.